



Type: CAL
H=35mm

x1



Gelieve de poot monteren aan de kant waar de beugel omhoog wijst.



PZ-2



Model Mambasa

Montagehandleiding

Schroefgaten zijn **niet** voorgeboord.

Aanduiding kunststof poot

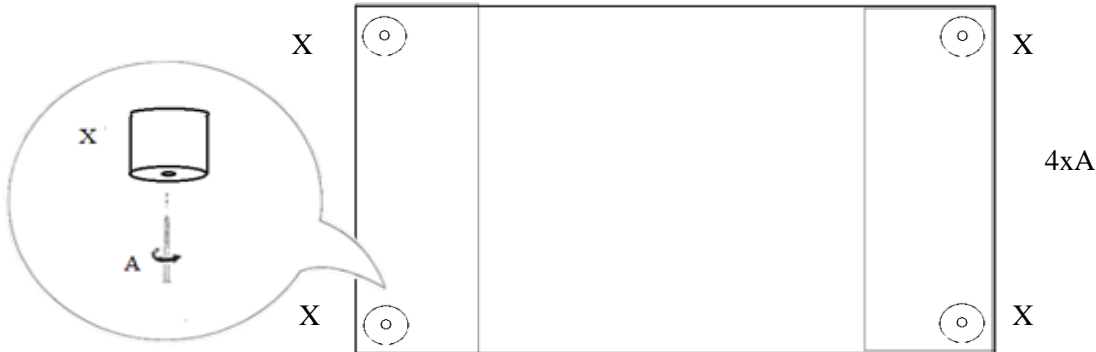
X

Aanduiding schroef

A

1M = relaxsystem met 1 motor

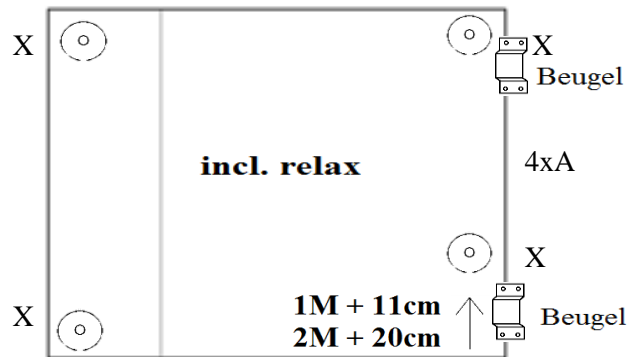
2M = relaxsystem met 2 motoren



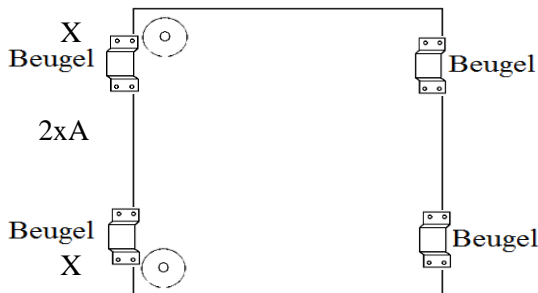
1 zits/ 1 zits Relax/ 1,5(75) zits/ 1,5(75) zits Relax/ 1,5(90) zits/ 1,5(90) zits Relax/ 2 zits/ 2,5 zits/ 3(2x90) zits/ 3(3x60) zits



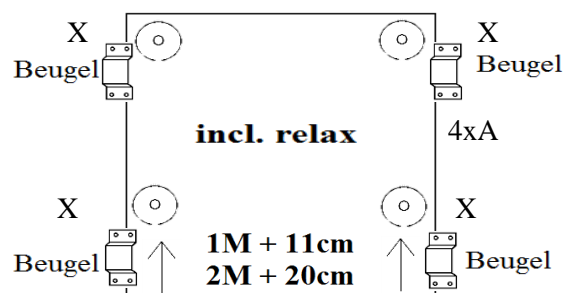
Arm links/rechts: 1 zits/1,5(75) zits/ 1,5(90) zits/ 2 zits/ 2,5 zits/ 3(2x90) zits/ 3(3x60) zits



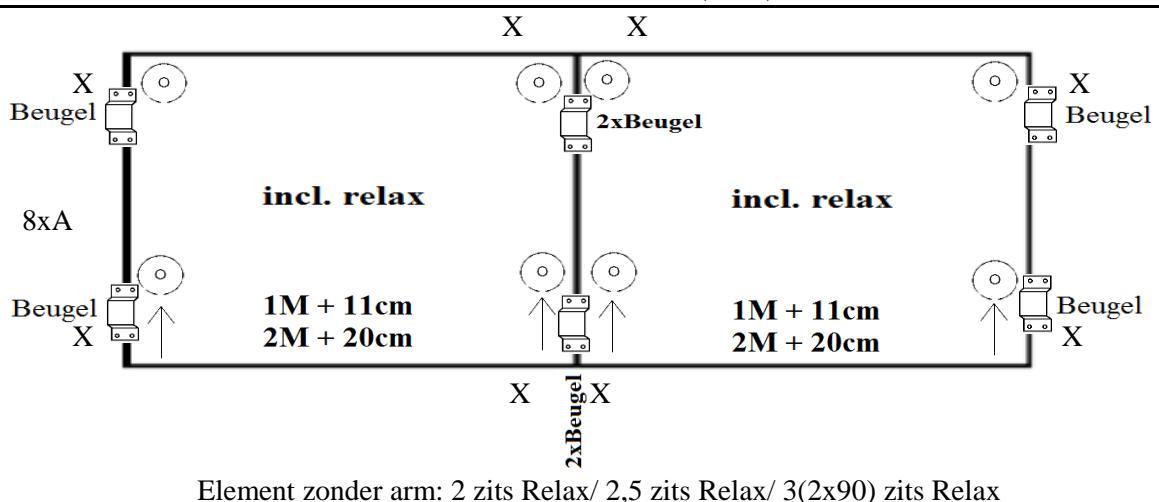
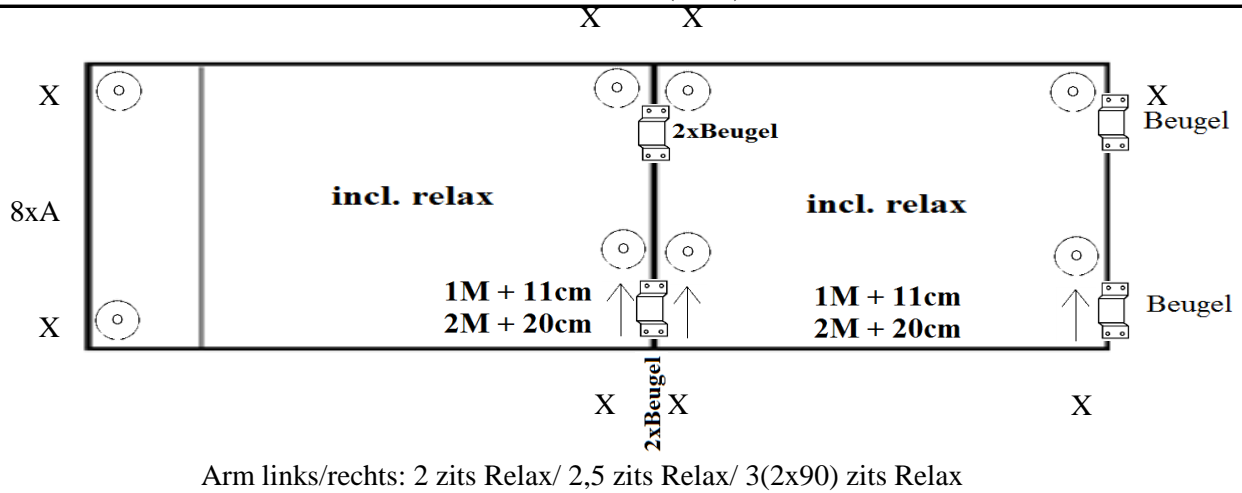
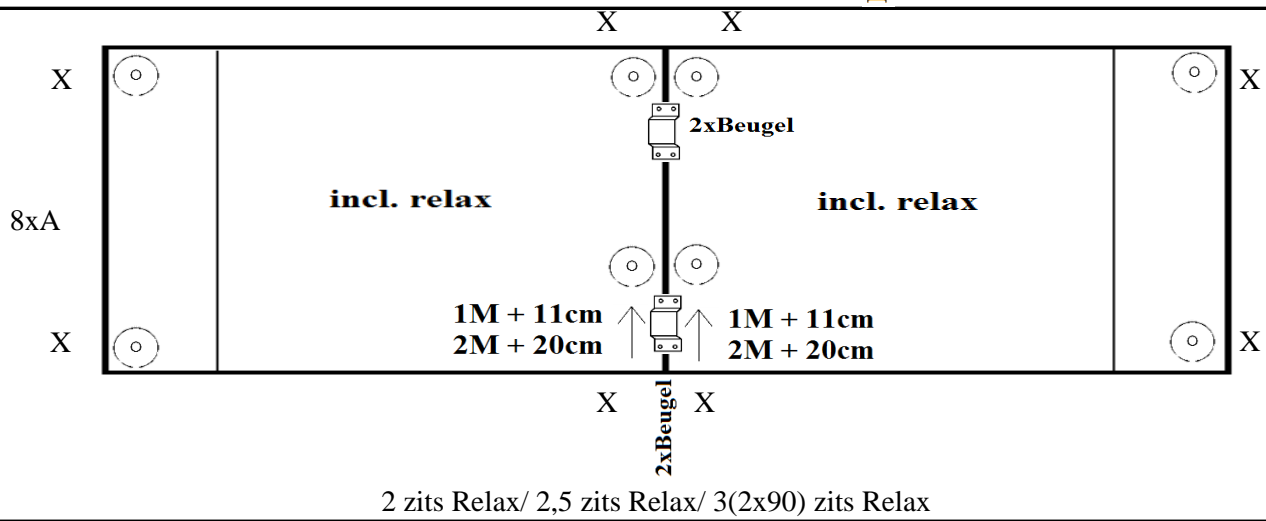
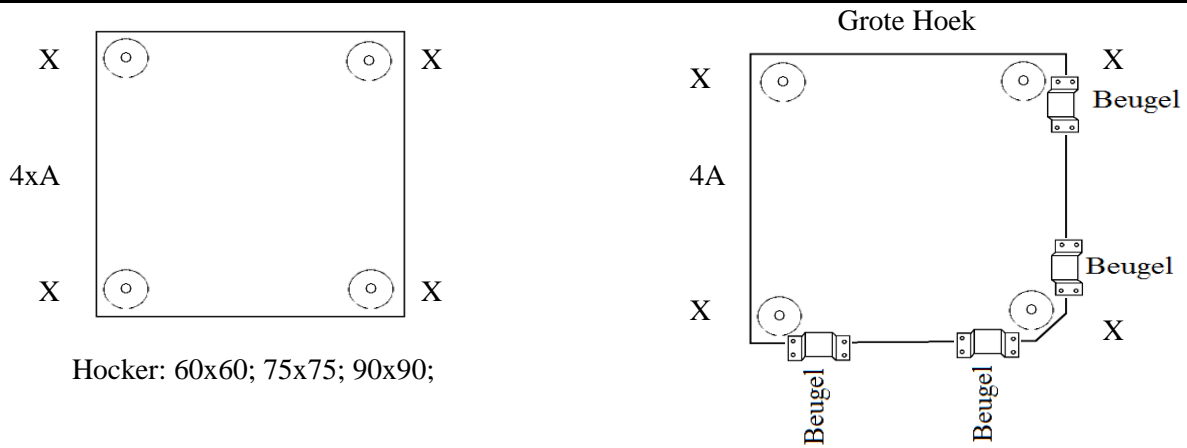
Arm links/rechts: 1 zits Relax/ 1,5(75) zits Relax/ 1,5(90) zits Relax

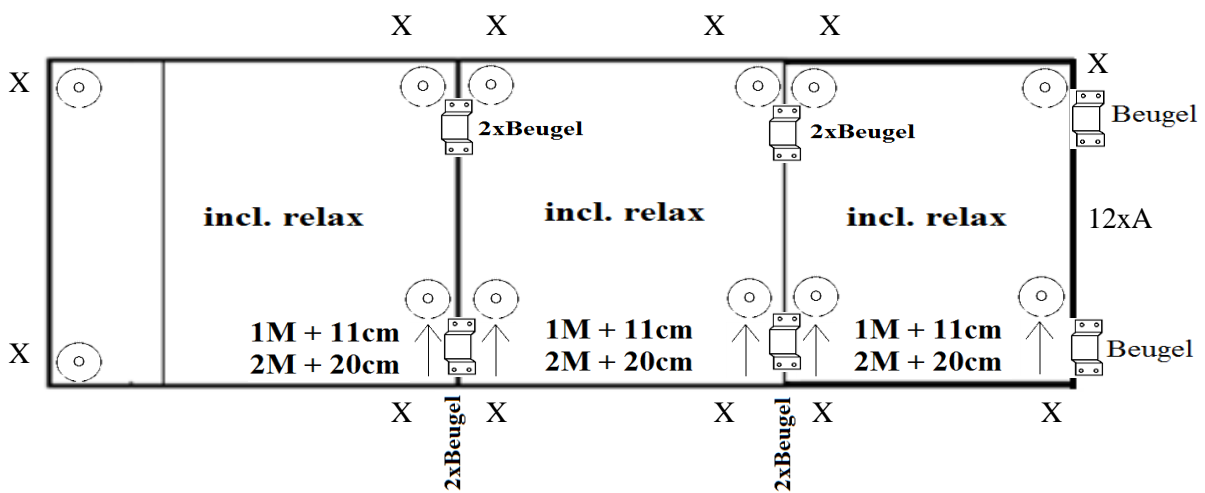
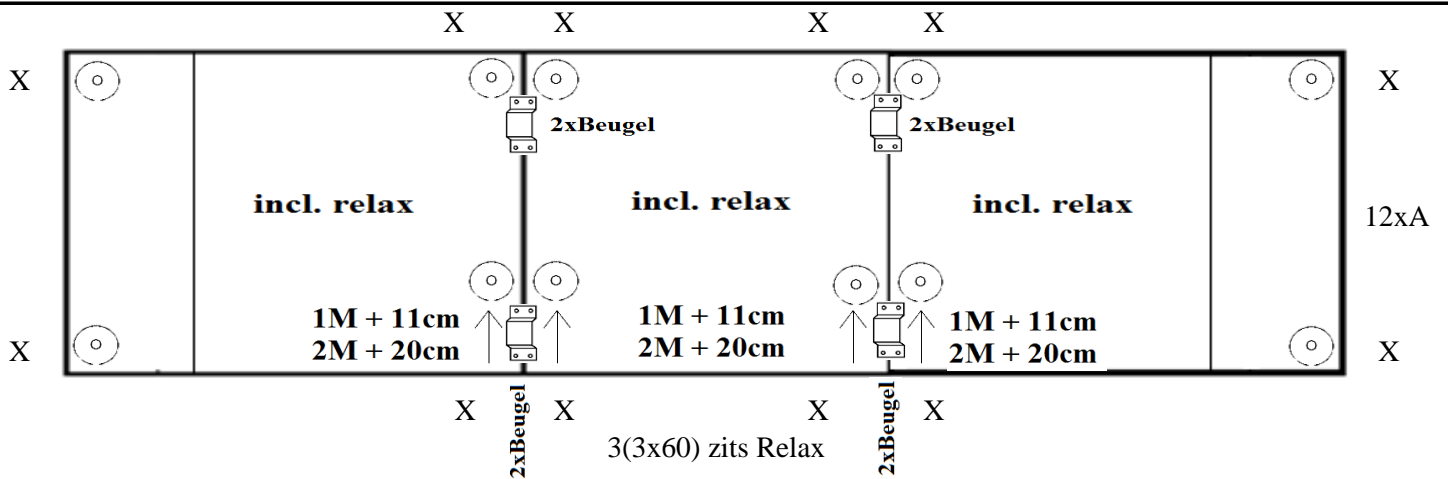


Element zonder arm: 1 zits/ 1,5(75) zits/ 1,5(90) zits; 2 zits/ 2,5 zits/ 3(2x90) zits/ 3(3x60) zits



Element zonder arm: 1 zits Relax/ 1,5(75) zits Relax/ 1,5(90) zits Relax





Arm links/rechts: 3(3x60) zits Relax

